

# Childhood obesity and multiple sclerosis: A Mendelian randomization study

Adil Harroud , Ruth E Mitchell, Tom G Richardson, John A Morris, Vincenzo Forgetta, George Davey Smith, Sergio E Baranzini  and J Brent Richards

## Abstract

**Background:** Higher childhood body mass index (BMI) has been associated with an increased risk of multiple sclerosis (MS).

**Objective:** To evaluate whether childhood BMI has a causal influence on MS, and whether this putative effect is independent from early adult obesity and pubertal timing.

**Methods:** We performed Mendelian randomization (MR) using summary genetic data on 14,802 MS cases and 26,703 controls. Large-scale genome-wide association studies provided estimates for BMI in childhood ( $n=47,541$ ) and adulthood ( $n=322,154$ ). In multivariable MR, we examined the direct effects of each timepoint and further adjusted for age at puberty. Findings were replicated using the UK Biobank ( $n=453,169$ ).

**Results:** Higher genetically predicted childhood BMI was associated with increased odds of MS (odds ratio (OR)=1.26/SD BMI increase, 95% confidence interval (CI): 1.07–1.50). However, there was little evidence of a direct effect after adjusting for adult BMI (OR=1.03, 95% CI: 0.70–1.53). Conversely, the effect of adult BMI persisted independent of childhood BMI (OR=1.43; 95% CI: 1.01–2.03). The addition of age at puberty did not alter the findings. UK Biobank analyses showed consistent results. Sensitivity analyses provided no evidence of pleiotropy.

**Conclusion:** Genetic evidence supports an association between childhood obesity and MS susceptibility, mediated by persistence of obesity into early adulthood but independent of pubertal timing.

**Keywords:** Multiple sclerosis, obesity, Mendelian randomization, genetic epidemiology

Date received: 13 February 2021; revised: 13 February 2021; accepted: 20 February 2021

## Introduction

Childhood obesity is a major public health problem, with more than a third of children in the United States being either overweight or obese, a trend which continues to increase.<sup>1</sup> Recently, observational studies have reported that obesity in early adulthood increases the risk of multiple sclerosis (MS).<sup>2–6</sup> While several studies also support a role for childhood obesity in MS,<sup>4,5,7</sup> some found that this association is no longer present following adjustment for obesity at a later life period.<sup>2,6</sup> Understanding the role of early life risk factors is particularly important in MS, as the childhood period is a potentially critical window for environmental exposures, and potentially, for interventions.<sup>8,9</sup> In addition, obesity is associated with a host of factors that can confound the association with the risk of acquiring the disease, which limits causal inference from traditional observational epidemiology.

Mendelian randomization (MR) is a strategy that can help address these limitations by harnessing natural genetic variation in populations to investigate the causal effect of a risk factor on an outcome.<sup>10</sup> This method greatly reduces confounding since allelic variants influencing different exposures are independently segregated and randomly assigned at conception.<sup>11</sup> The fact that genotypes are not modifiable by disease onset also limits reverse causation.<sup>10</sup> Previous MR studies have explored the relationship between obesity and MS but have reported on childhood or adult obesity separately.<sup>12–15</sup> Recent developments in MR can be applied to distinguish whether multiple exposures lie within the same causal pathway or if they have independent effects on the outcome.<sup>16</sup> Specifically, we have previously demonstrated the ability of genetic variants to separate between effects for childhood and adult body size using a multivariable MR framework.<sup>17</sup>

*Multiple Sclerosis Journal*

2021, Vol. 27(14) 2150–2158

DOI: 10.1177/  
13524585211001781

© The Author(s), 2021.  
Article reuse guidelines:  
sagepub.com/journals-  
permissions

Correspondence to:

**JB Richards**  
Centre for Clinical  
Epidemiology, Department  
of Epidemiology, Lady  
Davis Institute for Medical  
Research, Jewish General  
Hospital, 3755 Côte Ste-  
Catherine Road, Montreal,  
QC H3T 1E2, Canada.  
brent.richards@mcgill.ca

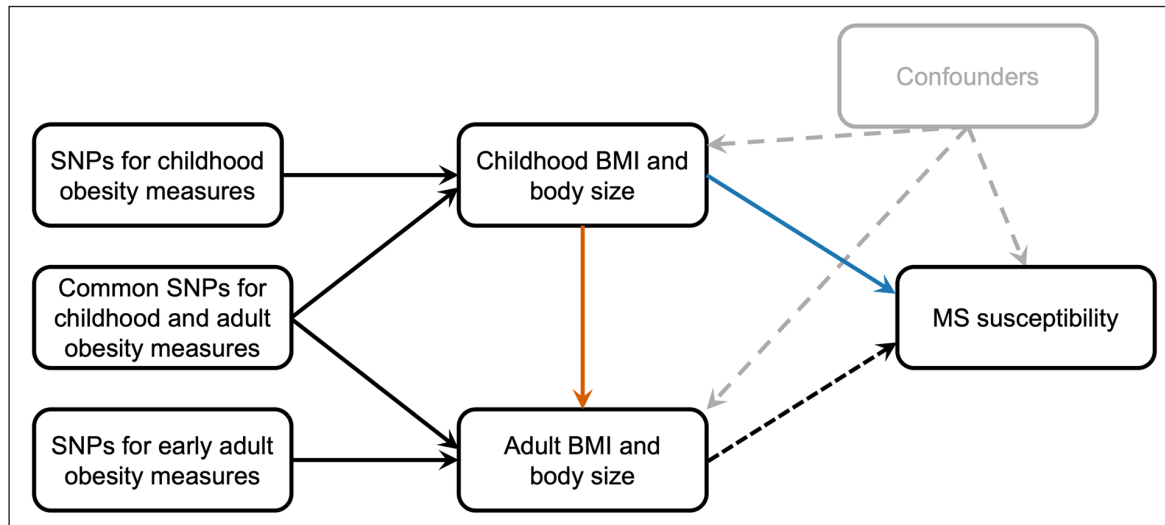
**Adil Harroud**  
Department of Neurology,  
University of California San  
Francisco, San Francisco,  
CA, USA/Weill Institute for  
Neurosciences, University of  
California San Francisco, San  
Francisco, CA, USA/Centre  
for Clinical Epidemiology,  
Department of Epidemiology,  
Lady Davis Institute for  
Medical Research, Jewish  
General Hospital, Montreal,  
QC, Canada

**Ruth E Mitchell**  
**Tom G Richardson**  
**George Davey Smith**  
MRC Integrative  
Epidemiology Unit, School  
of Social and Community  
Medicine, University  
of Bristol, Bristol, UK/  
Population Health Sciences,  
Bristol Medical School,  
University of Bristol, Bristol,  
UK

**John A Morris**  
New York Genome Center  
and Department of Biology,  
New York University, New  
York City, NY, USA

**Vincenzo Forgetta**  
Centre for Clinical  
Epidemiology, Department  
of Epidemiology, Lady  
Davis Institute for Medical  
Research, Jewish General  
Hospital, Montreal, QC,  
Canada/Department of  
Human Genetics, McGill  
University, Montreal, QC,  
Canada

**Sergio E Baranzini**  
Department of Neurology,  
University of California San  
Francisco, San Francisco,  
CA, USA/Weill Institute for  
Neurosciences, University of  
California San Francisco, San  
Francisco, CA, USA/Institute  
for Human



**Figure 1.** Directed acyclic graph of the possible pathways linking childhood obesity to MS susceptibility in a multivariable MR framework.

Childhood obesity could influence the risk of MS directly (blue arrow), indirectly via persistence of obesity into early adulthood (orange arrow), or a combination thereof. In contrast, under a causal model, the total effect of early adult obesity should be equivalent to its direct effect (dotted line). MS: multiple sclerosis; MR: Mendelian randomization; SNP: single nucleotide polymorphism; BMI: body mass index.

In this paper, we apply these methods to assess whether genetic predisposition toward higher childhood body mass index (BMI) increases the risk of MS. Then, we explore whether this effect is direct or mediated by the persistence of obesity into early adulthood (Figure 1). Similarly, we estimate the direct contribution of early adult obesity and further examine whether these associations are modified by pubertal timing. For this, we leveraged large-scale genome-wide association studies (GWAS) of MS, childhood and adult BMI (with a similar variance explained by the genetic instruments for both traits) and pubertal timing. We also provide independent replication using body size category estimates from the UK Biobank (UKB).

## Methods

### *Genetic instruments for childhood and adult BMI*

We identified genetic variants associated with childhood BMI using the largest GWAS meta-analysis of childhood BMI from the Early Growth Genetics (EGG) consortium, which included 47,541 children aged between 2 and 10 years (50.6% males).<sup>18</sup> Childhood BMI was calculated based on measured height and weight for more than 92% of participants. BMI values were transformed into standard deviation (SD) scores and adjusted for age and sex. Thus, the effect size for each allele represents a SD increase in childhood BMI, which in turn corresponds to a change in category from

normal weight to overweight.<sup>1,19</sup> To optimize power, we retained 23 single nucleotide polymorphisms (SNPs) that met either of the following criteria: (1) genome-wide significance ( $p$ -value  $< 5 \times 10^{-8}$ ) in the joint analysis of the EGG consortium GWAS,<sup>18</sup> or (2) suggestive association ( $p$ -value  $< 5 \times 10^{-6}$ ) with childhood BMI in EGG and genome-wide significance for the same variant with comparative body size at age 10 in the UKB ( $n=453,169$ ) (**Dataset S1**).<sup>20</sup> In a secondary analysis, we included only the 15 genome-wide significant SNPs satisfying the first criterion.

Effect estimates for adult BMI were obtained from a GWAS meta-analysis by the GIANT Consortium.<sup>21</sup> This included 322,154 individuals (47.1% males). Genetic associations were adjusted for age, age<sup>2</sup> and sex, yielding 77 genome-wide significant variants in the European ancestry analysis (**Dataset S2**). The average age of participants was 56 years,<sup>21</sup> which is beyond the usual age at MS diagnosis. However, previous studies have shown that a genetic risk score for BMI derived from those participants had a similar discriminative power in early adulthood (18–25 years) compared to middle adulthood, supporting the use of these variants to model early adult obesity in the context of MS (used interchangeably with adult obesity herein). For instance, the difference in BMI between the top and bottom fifth of genetic susceptibility in a Norwegian cohort was, respectively, 2.11 and 2.48 kg/m<sup>2</sup> for males and females aged 25, and 1.79 and 2.26 kg/m<sup>2</sup> for those aged 55.<sup>22</sup> Similar findings were reported in the

Genetics, University of California San Francisco, San Francisco, CA, USA/ Bakar Computational Health Sciences Institute, University of California San Francisco, San Francisco, CA, USA

**J Brent Richards**  
Centre for Clinical Epidemiology, Department of Epidemiology, Lady Davis Institute for Medical Research, Jewish General Hospital, Montreal, QC, Canada/Department of Human Genetics, McGill University, Montreal, QC, Canada/Department of Medicine, McGill University Montreal, QC, Canada/Department of Epidemiology, Biostatistics and Occupational Health, McGill University, Montreal, QC, Canada/Department of Twin Research & Genetic Epidemiology, King's College London, London, UK

Cardiovascular Risk in Young Finns Study, where the BMI difference between top and bottom genetic risk quartiles was approximately 2 kg/m<sup>2</sup> throughout early and middle-adulthood (18–49 years).<sup>23</sup> Importantly, these associations with BMI in early adulthood were replicated in other populations including United States<sup>24,25</sup> and British<sup>26</sup> cohorts.

#### *Genetic instruments for childhood and adult body size in UK Biobank*

Genetic instruments for childhood and adult body size were obtained from our previous GWAS of 453,169 participants from the UKB.<sup>20</sup> Details have been described previously.<sup>17</sup> Briefly, our childhood measure of body size was based on recall questionnaire data asking individuals “When you were 10 years old, compared to average would you describe yourself as thinner, plumper or about average?” Adult measured BMI (age range 40–69 years) was converted into a categorical variable with 3 groups using the same proportions as the early life variable. GWAS were undertaken with adjustment for age, sex and genotyping chip using BOLT-LMM. Childhood body size analyses were additionally adjusted for month of birth to account for the individuals’ relative age within their school year. This analysis yielded 298 and 557 independent genetic variants for childhood and adult body size respectively (**Datasets S3-4**). We previously showed that this childhood body size measure displayed a strong genetic correlation with childhood BMI estimates from the EGG consortium ( $r_g = 0.85$ ) and predicted childhood BMI in independent cohort (mean age 9.9 years).<sup>17</sup> Similarly, the categorical adult body size measure strongly correlates with the previous adult BMI effect from GIANT ( $r_g = 0.96$ ).

#### *Genetic associations with MS*

The effect estimates for each childhood and adult obesity-related variant on the risk of MS was obtained from the discovery cohorts of the latest GWAS meta-analysis by the International MS Genetics Consortium (IMSGC).<sup>27</sup> This dataset included 14,802 MS cases and 26,703 controls. When a genetic instrument for childhood or adult obesity measures was not present in another dataset, we identified a proxy SNP in linkage disequilibrium ( $r^2 > 0.6$ ) using PLINK v1.9 and samples of European ancestry from 1000 Genomes project (**Datasets S7-9**). All variants were aligned to the forward strand. In the case of childhood and adult BMI (not reported on GRCh37), forward strand alleles for palindromic SNPs were inferred for allele frequencies up to 0.42.

The presence of correlation between genetic instruments can lead to spurious MR estimates. Therefore, we ensured variant pairs were independent ( $r^2 < 0.01$ ). We also excluded variants within the extended major histocompatibility complex (MHC) region given that its strong association with MS and complex linkage disequilibrium make it susceptible to horizontal pleiotropy (violation of MR assumptions). All genetic data were restricted to individuals of European descent to limit population stratification.

#### *Univariable MR*

We performed inverse-variance weighted MR to investigate the total effect of genetically increased childhood and adult obesity measures (i.e. BMI and body size) on MS susceptibility, using previously described methods.<sup>28</sup> A key MR assumption is that the genetic variants associated with the exposure must not affect the outcome through pathways independent of the exposure (horizontal pleiotropy). We therefore conducted several sensitivity analyses to test this assumption.<sup>29</sup> First, we formally examined for overall horizontal pleiotropy using the MR Pleiotropy RESidual Sum and Outlier (MR-PRESSO) Global test.<sup>30</sup> We also applied MR-PRESSO to exclude outlier and thus potentially pleiotropic variants. Second, we performed MR-Egger, a weighted linear regression allowing for the intercept to be estimated as a measure of average horizontal pleiotropy, as long as the pleiotropic effects are independent of the SNP-exposure effects.<sup>31</sup> Third, we performed a weighted median analysis, which provides robust estimates despite the presence of horizontal pleiotropy in a subset (<50%) of variants.<sup>32</sup> In addition, we inspected funnel plots of the individual MR estimates against their precision, with asymmetry indicative of directional horizontal pleiotropy.<sup>31</sup> Consistent results across these analyses reduce the likelihood of bias.

For the main analysis on childhood BMI, we also assessed whether genetic variants were associated with potential confounders by examining them in PhenoScanner,<sup>33</sup> a comprehensive database of genotype-phenotype associations, using a nominal p-value Bonferroni-corrected for the number of variants ( $p < 0.05/23 = 0.00217$ ). Sensitivity analyses excluding variants associated with potential confounders were calculated.

To ensure that MR estimates did not suffer from weak instrument bias, we generated F-statistics for each genetic variant  $j$  using the formula

$$F_j = \frac{\gamma_j^2}{\sigma_{x_j}^2}$$

where  $\gamma_j$  is the SNP-exposure estimate and  $\sigma_{x_j}$  is the corresponding standard error, and we reported the mean F-statistic for each obesity measure.

Last, to exclude the possibility that biological processes underlying MS influence childhood BMI, bidirectional MR was performed using non-HLA variants associated with risk of MS, with childhood BMI as the outcome (**Dataset S5**).

### Multivariable MR

We undertook multivariable MR to estimate the direct effects of childhood and adult obesity measures in turn on the risk of MS. Genetic instruments for each trait were included as in the univariable MR, after exclusion of outliers. For each variant, effect estimates on both childhood and adult obesity measures are included in a weighted multivariable regression model.<sup>16</sup> In addition, given the proposed role for pubertal timing in MS and its correlation with body weight status,<sup>34,35</sup> we repeated the analysis with age at puberty as a third exposure (along with childhood and adult obesity measures) using genetic determinants of age at menarche as previously reported ( $n=329,245$ ).<sup>35,36</sup> The genetic architecture of pubertal timing across both sexes is highly correlated ( $r_g=0.75$ ;  $p=1.2 \times 10^{-79}$ ), allowing these variants to provide insight into pubertal timing in males as well. Therefore, they are referred to as age at puberty variants.

All statistical analyses were performed in *R* (version 3.4.1). Statistical significance was set to  $p < 0.05$  unless otherwise specified. The data sources used in this study (IMSGC, EGG consortium, GIANT consortium, ReproGen consortium and UKB) obtained informed consent from all participants.

## Results

### Univariable MR

Univariable MR using the 23 childhood BMI-related SNPs showed that each 1-SD increase in childhood BMI was associated with 26% higher odds of MS (odds ratio (OR)=1.26, 95% confidence interval (CI) 1.07–1.50,  $p$ -value=0.006). A secondary analysis using the restricted set of 15 genome-wide significant SNPs yielded consistent results (OR=1.23, 95% CI: 1.05–1.43,  $p$ -value=0.01). In PhenoScanner,<sup>33</sup> we identified associations with potential confounders between rs13387838 and smoking initiation ( $p=0.002$ ), rs25832 and generalized epilepsies ( $p=1.02 \times 10^{-6}$ ), as well as

between two variants and the number of years of schooling completed (rs13107325,  $p=0.002$ ; rs7869969,  $p=5.3 \times 10^{-6}$ ). Exclusion of these four variants had no influence on the results (OR=1.29, 95% CI: 1.12–1.49,  $p$ -value=0.0006). All observed SNP-phenotype associations are listed in **Dataset S10**; none were found for other reported MS risk factors including vitamin D levels, sun exposure, Epstein Barr virus (EBV) or cytomegalovirus (CMV) infection, oral tobacco or organic solvent exposure. Similar findings were replicated using 277 childhood body size-related variants from the UKB (OR=1.40/change in body size category, 95% CI: 1.10–1.78,  $p$ -value=0.01) (**Dataset S3**).

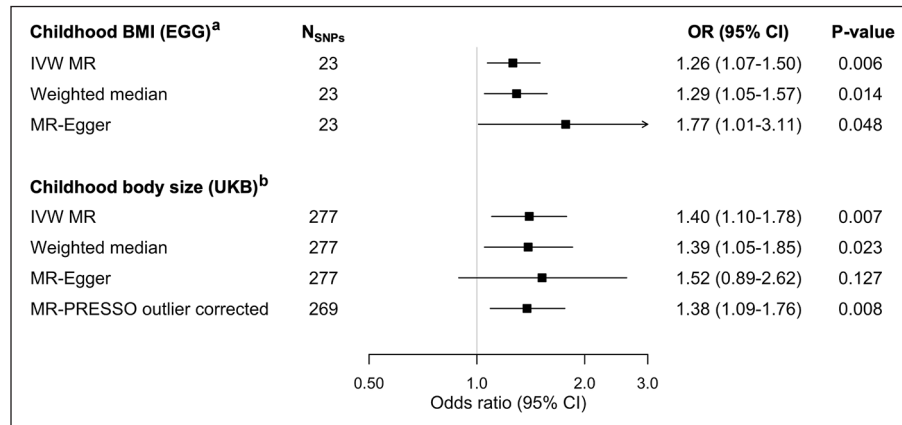
These results were robust to sensitivity analyses for pleiotropy in both the EGG childhood BMI and UKB childhood body size analyses (Figure 2). The MR-PRESSO global test showed no evidence of pleiotropy for the EGG childhood BMI analysis ( $p$ -value=0.093). In the larger UKB childhood body size analysis, the MR-PRESSO global test was significant ( $p$ -value  $< 2 \times 10^{-5}$ ) yet the MR estimate after excluding 8 outlier variants (**Dataset S3**) remained largely unchanged (OR=1.38, 95% CI: 1.09–1.76,  $p$ -value=0.008). The MR-Egger intercept was centered around zero (EGG childhood BMI: intercept=-0.020, 95% CI: -0.052–0.012,  $p$ -value=0.22; UKB childhood body size: intercept=-0.001, 95% CI: -0.008–0.006,  $p$ -value=0.72). The MR-Egger and weighted median estimates were consistent with the main finding (Figure 2). Funnel plots were found to be approximately symmetric (Figure 3). Using 188 non-MHC MS-related SNPs (**Dataset S5**), we found no evidence that genetically increased MS susceptibility influenced childhood BMI (OR=1.01/log(odds) increase in MS, 95% CI: 0.99–1.02,  $p$ -value=0.519).

Evaluating the effect of adult BMI on the risk of MS, univariable MR using 74 variants revealed a 40% increase in the odds of MS per 1-SD increase in BMI (OR=1.40, 95% CI: 1.17–1.67,  $p=3.1 \times 10^{-4}$ ). The 522 genetic determinants of adult body size in the UKB identified a concordant association (OR=1.52/change in body size category, 95% CI: 1.29–1.80,  $p$ -value= $8.2 \times 10^{-7}$ )

The mean F-statistics for obesity measures were all greater than 10, suggesting adequately strong instruments (childhood BMI: 45.2, adult BMI: 67.3, childhood body size: 66.9, adult body size: 52.0).

### Multivariable Mendelian randomization

The direct effect of childhood obesity measures on the risk of MS was notably weaker compared to the total

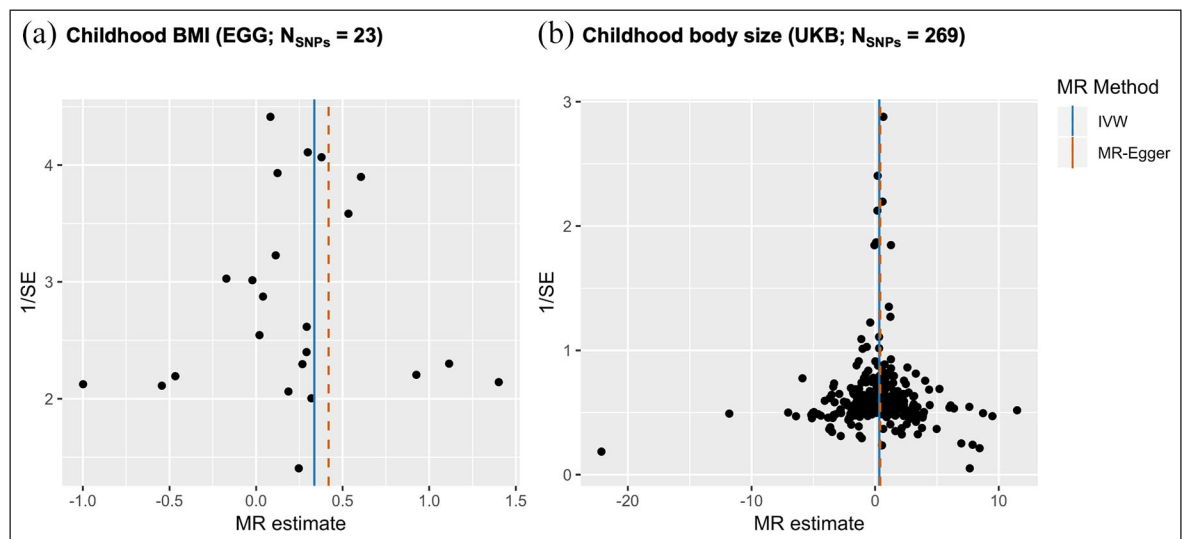


**Figure 2.** Forest plot showing the univariable MR estimates investigating the total effect of childhood obesity measures on MS.

There were no MR-PRESSO outlier variants identified in the EGG childhood BMI analysis. MR: Mendelian randomization; MS: multiple sclerosis; PRESSO: Pleiotropy RESidual Sum and Outlier; EGG: Early Growth Genetics; BMI: body mass index; NSNPs: number of variants in the analysis; SNP: single nucleotide polymorphism; IVW: inverse-variance weighted; UKB: UK Biobank; OR: Odds ratio; CI: confidence intervals.

<sup>a</sup>Odds ratios for MS are reported per standard deviation increase in BMI.

<sup>b</sup>Odds ratios for MS are reported per change in body size category.

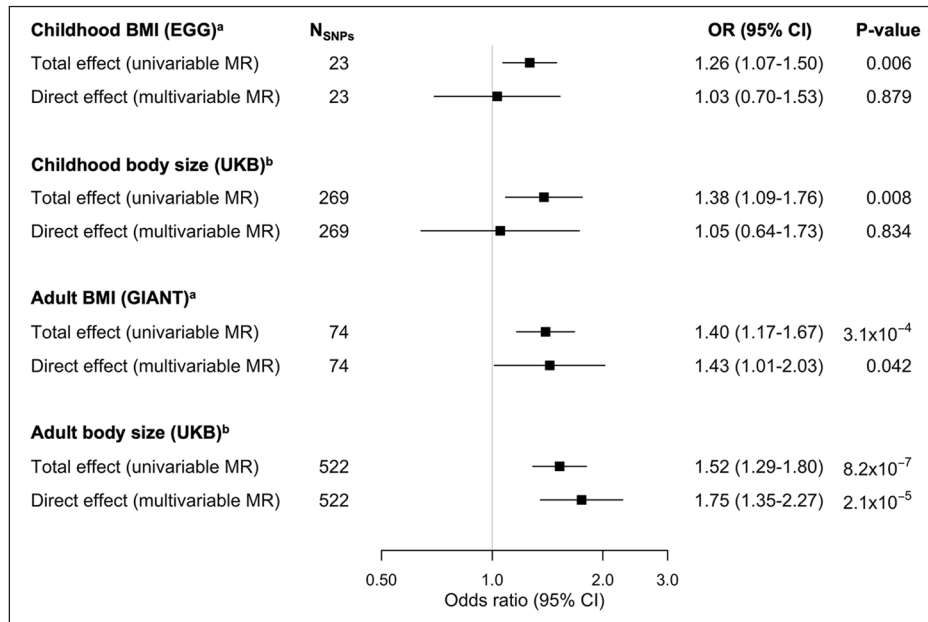


**Figure 3.** Funnel plots of the individual MR estimates against their precision for the effect on MS of (a) childhood BMI and (b) childhood body size.

MR: Mendelian randomization; MS: multiple sclerosis; BMI: body mass index; EGG: Early Growth Genetics; N<sub>SNPs</sub>: number of variants in the analysis; SNP: single nucleotide polymorphism; UKB=UK Biobank; IVW: inverse-variance weighted.

effect reported in the univariable analyses (Figure 4). For childhood BMI, this direct effect (not mediated by adult BMI) was essentially null (OR=1.03, 95% CI: 0.70–1.53, *p*-value=0.88). UKB childhood body size estimates similarly found evidence against a direct effect on MS (OR=1.05, 95% CI: 0.64–1.73, *p*-value=0.84). The addition of age at puberty to the model did not alter the results (EGG childhood BMI: OR=1.10, 95% CI: 0.68–1.78, *p*-value=0.70; UKB

childhood body size: OR=1.02, 95% CI: 0.59–1.74, *p*-value=0.95). In contrast, direct effect estimates for adult obesity measures remained robust and consistent with the total effects (Figure 4; GIANT adult BMI: OR=1.43; 95% CI: 1.01–2.03, *p*-value=0.04; UKB adult body size: OR=1.75, 95% CI: 1.35–2.27, *p*-value=2.1 x 10<sup>-5</sup>). Inclusion of age at puberty did also not affect the estimates (adult BMI: OR=1.54, 95% CI: 1.07–2.21, *p*-value=0.02; adult body size:



**Figure 4.** Forest plot illustrating the total and direct effects of childhood and adult obesity measures on MS.

Effects from univariable MR are post outlier removal when applicable. MS: multiple sclerosis; MR: Mendelian randomization; BMI: body mass index; EGG: Early Growth Genetics; GIANT: Genetic Investigation of ANthropometric Traits; N<sub>SNPs</sub>: number of variants in the analysis; SNP: single nucleotide polymorphism; OR: Odds ratio; CI: confidence intervals; UKB: UK Biobank.

<sup>a</sup>Odds ratios for MS are reported per standard deviation increase in BMI.

<sup>b</sup>Odds ratios for MS are reported per change in body size category

OR = 1.75, 95% CI: 1.34–2.28,  $p$ -value =  $3.4 \times 10^{-5}$ . The datasets used in the multivariable MR are presented in Datasets S6–9.

## Discussion

This study examined the relative contribution of childhood and early adult obesity on the risk of MS using an MR framework. The results provide genetic support for a total causal effect of childhood obesity on MS susceptibility, albeit indirectly through persistence of larger body size in early adulthood. Indeed, when analyzed together with adult obesity measures, the contribution of childhood obesity was considerably attenuated and compatible with a null effect. In contrast, the association between adult obesity measures and MS remained unchanged after adjusting for childhood obesity measures, implying a direct effect on the risk of disease. Similar findings were obtained with both BMI measures and body size categories from independent cohorts, with the differences in effect sizes explained by the different scales (SD increase for BMI vs change in body size category). We conducted several sensitivity analyses which found little evidence of genetic pleiotropy, adding further robustness to the findings. We have also shown that biological mechanisms underlying MS susceptibility do not have a large influence obesity measures. In addition, the

inclusion of pubertal timing in multivariable MR did not influence the results, indicating that it does not lie within the causal pathway between obesity and MS risk. The finding corroborates our previous study showing that age at puberty does not exert independent effects on MS risk, but this does not eliminate the possibility that puberty attainment (rather its timing) may still play a key role in MS onset.<sup>36</sup>

These findings support previous observational studies that have examined the role of childhood obesity in MS. A prospective study reported a hazard ratio for MS of 1.15 to 1.18 per unit increase in BMI z-score measured between ages 7 and 13.<sup>7</sup> This was replicated in different populations using self-reported weight status.<sup>4,5</sup> Those studies did not account for possible effects of obesity in later life. A study including women from two US cohorts reported a possible increased risk of MS with larger childhood body size at ages 5 and 10 using recalled silhouettes; however, this association was no longer present after adjusting for body size at age 20.<sup>2</sup> Conversely, larger body size at age 20 remained associated with MS despite adjustment for earlier time points. A case-control study similarly found that BMI at age 20, but not body size at age 10, was independently associated with MS risk.<sup>6</sup> Together with these observational findings, our results argue against a persistent effect of childhood obesity.

Previous MR studies have explored the relationship between obesity and MS but did not distinguish between childhood and adult time periods.<sup>12–14,37</sup> Interestingly, our estimates for the total effect of adult BMI agree exactly with those from an earlier study using an earlier MS susceptibility GWAS (OR=1.41, 95% CI: 1.20–1.66).<sup>13</sup> Another MR study found no association between pediatric MS and an unweighted genetic risk score of 28 variants for childhood BMI,<sup>37</sup> although this could be attributable to the smaller sample size compared to the present study (569 vs 14,802 cases) and the inclusion of weakly associated variants. More recent work reported a similar effect for childhood BMI on MS using the EGG consortium estimates, but did not account for adult obesity.<sup>14</sup>

The mechanisms by which obesity contributes to the etiology of MS are largely unknown. Proposed mechanisms include reduced circulating vitamin D levels and chronic inflammation secondary to increased adiposity.<sup>15</sup> In addition, higher BMI has also been shown to interact with environmental and genetic factors to increase risk of MS, namely EBV infection<sup>38</sup> and HLA-DRB1\*15 status.<sup>39</sup>

An important strength of this study is the application of a two-sample MR approach which minimizes the risk of bias from confounding and allowed us to leverage large-scale genetic data on childhood and adult obesity measures as well as MS. Furthermore, we provide replication of our results using the UKB resource ( $n=453,169$ ). We also build on recent methodological developments in multivariable MR to investigate time-dependent effects, an approach which may prove useful in other neurological conditions. Nonetheless, we acknowledge a number of limitations. We cannot completely exclude the possibility of horizontal pleiotropy, which could bias the reported estimates. However, our sensitivity analyses included a range of methods that yielded generally consistent results. In selecting our genetic instruments for the EGG childhood BMI analysis, we included 8 variants that showed a suggestive association ( $p$ -value  $< 5 \times 10^{-6}$ ) but were not genome-wide significant. This was justified by the gain in power and validated by their genome-wide significant association with body size at age 10 in the larger UKB. Repeating the analysis with only the 15 SNPs genome-wide significant in EGG resulted in similar point estimates across the various analyses. In addition, the inclusion of weak instruments in two-sample MR would be expected to drive the association toward the null. The imbalance in sample size between the EGG childhood BMI cohort ( $N=47,541$ ) and GIANT adult BMI cohort ( $N=322,154$ ) could have led to incomplete adjustment for childhood effects in

multivariable MR. However, this possibility is lessened by the fact that both genetic instruments explained a similar variance in their respective traits (2.7% for childhood BMI and 2.3% for adult BMI). Moreover, the UKB analysis included the same number of individuals for both exposures. The adult BMI genetic estimates were derived from GWAS in middle-aged individuals older than the average age at MS onset. While subsequent studies support their influence over BMI in early adulthood, additional work is needed to better characterize age- and period-specific genetic effects using longitudinal measures and BMI trajectories throughout childhood, adolescence and adulthood. This study was restricted to individuals of European descent to prevent population stratification and therefore our findings have limited generalizability to other ancestral populations. European ancestry individuals were chosen because most GWAS data arises from individuals of this ancestry. This underlines the importance of on-going efforts to conduct GWAS in individuals of non-European ancestry. Last, the use of summary statistics precluded sex-stratified analyses as such genetic data sets are not currently available for MS. Reassuringly, previous cohort and case-control studies have found no difference between MS risk and childhood or early adult obesity in males and females, although lower sample size for men generally led to reduced power.<sup>6,7</sup>

In conclusion, this study provides genetic evidence supporting a role for childhood and early adult obesity in the development of MS. Importantly, our results also suggest that the effects of childhood obesity on MS are mediated by persistence of obesity into early adulthood, but independent of pubertal timing. These findings may help counsel individuals at high risk of MS and inform prevention strategies. Further investigation is required to better understand the biological mechanisms by which obesity influences the development of MS.

### Acknowledgements

We wish to kindly thank the IMSGC, EGG and GIANT consortia for access to their summary statistics data. We also thank Professor Stephen Sawcer at the University of Cambridge for his assistance with the IMSGC dataset. Part of this work was conducted using the UK Biobank resource.

### Declaration of Conflicting Interest

The author(s) declared the following potential conflicts of interest with respect to the research, authorship, and/or publication of this article: B.R. reported receiving compensation for consulting fees from GlaxoSmithKline and Deerfield Capital outside the

submitted work. S.E.B. reported receiving compensation for consulting fees from EMD Serono, Novartis, Merck & Co and Sanofi-Aventis outside of the submitted work. No other disclosures were reported.

### Funding

The author(s) disclosed receipt of the following financial support for the research, authorship, and/or publication of this article: A.H. is funded by the NMSS-ABF Clinician Scientist Development Award from the National Multiple Sclerosis Society (NMSS) and the Multiple Sclerosis Society of Canada (MSSC). J.B.R. is supported by the Canadian Institutes of Health Research (CIHR), the Canadian Foundation for Innovation and the Fonds de Recherche du Québec—Santé (FRQS). J.B.R. is funded by a FRQS Clinical Research Scholarship and received research support from the NMSS and the MSSC. TwinsUK is funded by the Wellcome Trust, Medical Research Council, European Union, the National Institute for Health Research (NIHR)-funded BioResource, Clinical Research Facility and Biomedical Research Center based at Guy's and St Thomas' NHS Foundation Trust in partnership with King's College London. J.A.M. is funded by the CIHR. R.E.M. and G.D.S. work in the Medical Research Council Integrative Epidemiology Unit at the University of Bristol (grant number MC\_UU\_00011/1). T.G.R. is a UKRI Innovation Research Fellow (MR/S003886/1).

### ORCID iDs

Adil Harroud  <https://orcid.org/0000-0003-2616-7274>

Sergio E Baranzini  <https://orcid.org/0000-0003-0067-194X>

### References

1. Skinner AC, Ravanbakht SN, Skelton JA, et al. Prevalence of obesity and severe obesity in US children, 1999–2016. *Pediatrics* 2018; 141: e20173459.
2. Munger KL, Chitnis T and Ascherio A. Body size and risk of MS in two cohorts of US women. *Neurology* 2009; 73: 1543–1550.
3. Hedstrom AK, Olsson T and Alfredsson L. High body mass index before age 20 is associated with increased risk for multiple sclerosis in both men and women. *Mult Scler* 2012; 18: 1334–1336.
4. Gianfrancesco MA, Acuna B, Shen L, et al. Obesity during childhood and adolescence increases susceptibility to multiple sclerosis after accounting for established genetic and environmental risk factors. *Obes Res Clin Pract* 2014; 8: e435–e447.
5. Wesnes K, Riise T, Casetta I, et al. Body size and the risk of multiple sclerosis in Norway and Italy: The EnvIMS study. *Mult Scler* 2015; 21: 388–395.
6. Hedstrom AK, Olsson T and Alfredsson L. Body mass index during adolescence, rather than childhood, is critical in determining MS risk. *Mult Scler* 2016; 22: 878–883.
7. Munger KL, Bentzen J, Laursen B, et al. Childhood body mass index and multiple sclerosis risk: A long-term cohort study. *Mult Scler* 2013; 19: 1323–1329.
8. Islam T, Gauderman WJ, Cozen W, et al. Childhood sun exposure influences risk of multiple sclerosis in monozygotic twins. *Neurology* 2007; 69: 381–388.
9. McLeod JG, Hammond SR and Kurtzke JF. Migration and multiple sclerosis in immigrants to Australia from United Kingdom and Ireland: A reassessment. I. Risk of MS by age at immigration. *J Neurol* 2011; 258: 1140–1149.
10. Smith GD and Ebrahim S. “Mendelian randomization”: can genetic epidemiology contribute to understanding environmental determinants of disease? *Int J Epidemiol* 2003; 32: 1–22.
11. Smith GD, Lawlor DA, Harbord R, et al. Clustered environments and randomized genes: A fundamental distinction between conventional and genetic epidemiology. *PLoS Med* 2007; 4(12): e352.
12. Gianfrancesco MA, Glymour MM, Walter S, et al. Causal effect of genetic variants associated with body mass index on multiple sclerosis susceptibility. *Am J Epidemiol* 2017; 185: 162–171.
13. Mokry LE, Ross S, Timpson NJ, et al. Obesity and multiple sclerosis: A Mendelian randomization study. *PLoS Med* 2016; 13(6): e1002053.
14. Jacobs BM, Noyce AJ, Giovannoni G, et al. BMI and low vitamin D are causal factors for multiple sclerosis: A Mendelian randomization study. *Neuro Immunol Neuroinflamm* 2020; 7(2): e662.
15. Harroud A and Richards JB. Mendelian randomization in multiple sclerosis: A causal role for vitamin D and obesity? *Mult Scler* 2018; 24(1): 80–85.
16. Burgess S, Thompson DJ, Rees JMB, et al. Dissecting causal pathways using Mendelian randomization with summarized genetic data: Application to age at menarche and risk of breast cancer. *Genetics* 2017; 207(2): 481–487.
17. Richardson TG, Sanderson E, Elsworth B, et al. Use of genetic variation to separate the effects of early and later life adiposity on disease risk: Mendelian randomisation study. *BMJ* 2020; 369: m1203.
18. Felix JF, Bradfield JP, Monnereau C, et al. Genome-wide association analysis identifies three new



- susceptibility loci for childhood body mass index. *Hum Mol Genet* 2016; 25: 389–403.
19. World Health Organization. Noncommunicable diseases: Childhood overweight and obesity, 2020, <https://www.who.int/dietphysicalactivity/childhood/en/> (accessed May 2020).
  20. Bycroft C, Freeman C, Petkova D, et al. The UK Biobank resource with deep phenotyping and genomic data. *Nature* 2018; 562(7726): 203–209.
  21. Locke AE, Kahali B, Berndt SI, et al. Genetic studies of body mass index yield new insights for obesity biology. *Nature* 2015; 518: 197–206.
  22. Brandkvist M, Bjorngaard JH, Odegard RA, et al. Quantifying the impact of genes on body mass index during the obesity epidemic: Longitudinal findings from the HUNT Study. *BMJ* 2019; 366: l4067.
  23. Buscot MJ, Wu F, Juonala M, et al. Longitudinal association of a body mass index (BMI) genetic risk score with growth and BMI changes across the life course: The Cardiovascular Risk in Young Finns Study. *Int J Obes (Lond)* 2020; 44(8): 1733–1742.
  24. Song M, Zheng Y, Qi L, et al. Longitudinal analysis of genetic susceptibility and BMI throughout adult life. *Diabetes* 2018; 67(2): 248–255.
  25. Graff M, Ngwa JS, Workalemahu T, et al. Genome-wide analysis of BMI in adolescents and young adults reveals additional insight into the effects of genetic loci over the life course. *Hum Mol Genet* 2013; 22: 3597–3607.
  26. Khera AV, Chaffin M, Wade KH, et al. Polygenic prediction of weight and obesity trajectories from birth to adulthood. *Cell* 2019; 177: 587–596.e589.
  27. International Multiple Sclerosis Genetics Consortium. Multiple sclerosis genomic map implicates peripheral immune cells and microglia in susceptibility. *Science* 2019; 365: eaav7188.
  28. Dastani Z, Hivert MF, Timpson N, et al. Novel loci for adiponectin levels and their influence on type 2 diabetes and metabolic traits: A multi-ethnic meta-analysis of 45,891 individuals. *PLoS Genet* 2012; 8(3): e1002607.
  29. Hemani G, Bowden J and Davey Smith G. Evaluating the potential role of pleiotropy in Mendelian randomization studies. *Hum Mol Genet* 2018; 27: R195–R208.
  30. Verbanck M, Chen CY, Neale B, et al. Detection of widespread horizontal pleiotropy in causal relationships inferred from Mendelian randomization between complex traits and diseases. *Nat Genet* 2018; 50: 693–698.
  31. Bowden J, Davey Smith G and Burgess S. Mendelian randomization with invalid instruments: Effect estimation and bias detection through Egger regression. *Int J Epidemiol* 2015; 44(2): 512–525.
  32. Bowden J, Davey Smith G, Haycock PC, et al. Consistent estimation in Mendelian randomization with some invalid instruments using a weighted median estimator. *Genet Epidemiol* 2016; 40(4): 304–314.
  33. Kamat MA, Blackshaw JA, Young R, et al. PhenoScanner V2: An expanded tool for searching human genotype-phenotype associations. *Bioinformatics* 2019; 35: 4851–4853.
  34. Waubant E. Effect of puberty on multiple sclerosis risk and course. *Mult Scler* 2018; 24(1): 32–35.
  35. Day FR, Thompson DJ, Helgason H, et al. Genomic analyses identify hundreds of variants associated with age at menarche and support a role for puberty timing in cancer risk. *Nat Genet* 2017; 49(6): 834–841.
  36. Harroud A, Morris JA, Forgetta V, et al. Effect of age at puberty on risk of multiple sclerosis: A Mendelian randomization study. *Neurology* 2019; 92: e1803–e1810.
  37. Gianfrancesco MA, Stridh P, Rhead B, et al. Evidence for a causal relationship between low vitamin D, high BMI, and pediatric-onset MS. *Neurology* 2017; 88: 1623–1629.
  38. Hedstrom AK, Lima Bomfim I, Hillert J, et al. Obesity interacts with infectious mononucleosis in risk of multiple sclerosis. *Eur J Neurol* 2015; 22(3): 578–e38.
  39. Hedstrom AK, Lima Bomfim I, Barcellos L, et al. Interaction between adolescent obesity and HLA risk genes in the etiology of multiple sclerosis. *Neurology* 2014; 82: 865–872.